

The Rocky Butte Preservation Society Presents:

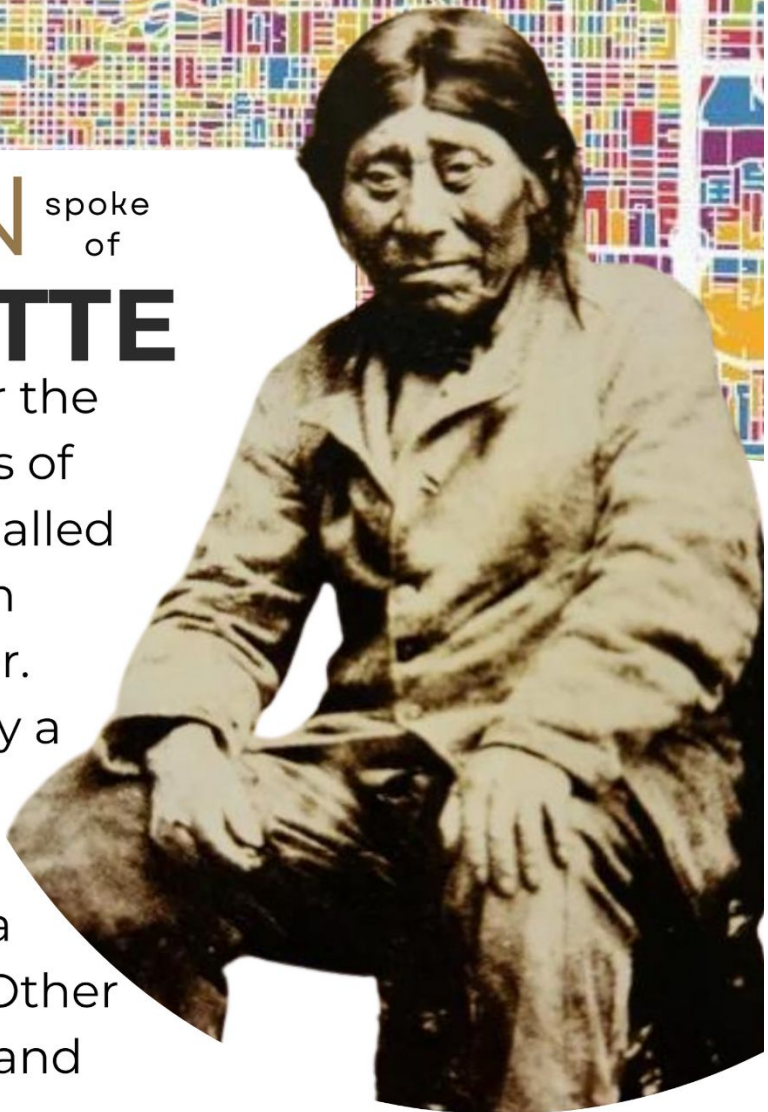


Newspaper clippings from the Historical Archives of The Oregonian
Dare to Discover Local History!



OLD JOHN spoke of ROCKY BUTTE

as a hunting grounds for the Chinook-speaking bands of people in Portland. He called it "Mowich Illahee" which means Home of the Deer. Sandy Blvd was originally a native footpath which led by Rocky Butte and connected the Columbia and Willamette Rivers. Other foot trails are Cully Blvd and Foster Rd, which have a diagonal orientation.



MAP BY MICHAEL TOMPSETT

PHOTO FROM *THE INDIANS OF WESTERN OREGON*



THE AIRWAY BEACON

THIS STRUCTURE WAS BUILT IN 1930 AND IS PART OF THE ARCHAIC PORTLAND-SPOKANE LIGHTED AIRWAY. THIS SYSTEM PREDATED RADIO NAVIGATION SO MAIL CARRIER PILOTS WOULD SIMPLY FOLLOW THESE MANY ROTATING LIGHTS AT NIGHT WHILE TRAVERSING THROUGH THE GORGE.

IN 1973 IT WAS ALMOST DECOMMISSIONED UNTIL STUDENTS AT JASON LEE ELEMENTARY ORGANIZED EFFORTS TO PRESERVE THE LANDMARK. THIS IS ONE OF THE VERY LAST BEACONS STILL SHINING IN THE NATION!

Pay'n Save *Extra Value!*

POCKET WATCH

With Second Hand Reg. 2.49

With This Coupon **\$1.59**


One Coupon per customer cash value 1/20th of 1¢. Coupon Expires Aug. 29



NORTHERN PACIFIC

TIME CARD
OF
TRAINS

PORTLAND:



Dancing Tonight

Ringier's Cotillion Hall,
14th. Off Wash.

Come and hear that wonderful new Jasszy Orchestra. Ball-bearing spring floor. Informals every Tues., Wed., Fri., and Sat. Eve. Dancing lessons private, and class given daily by the best instructors.

Eight Lessons \$5
R.D.W.Y. 8350, A. 8351.

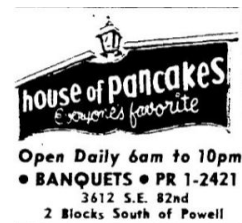
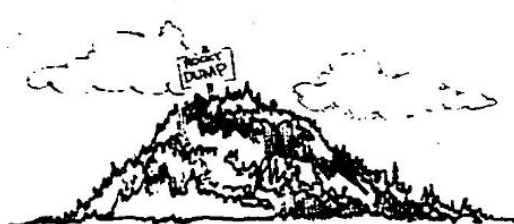


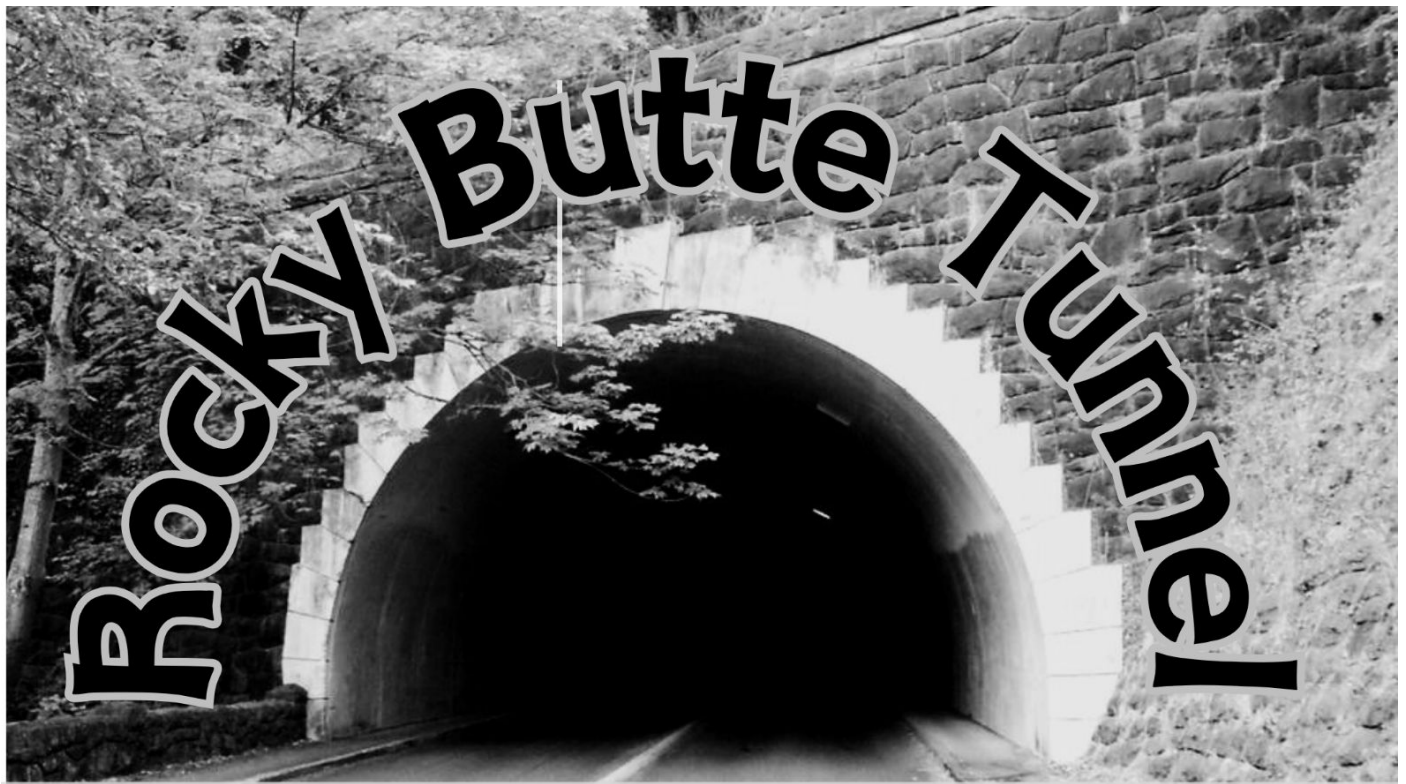
ROCKY BUTTE JAIL



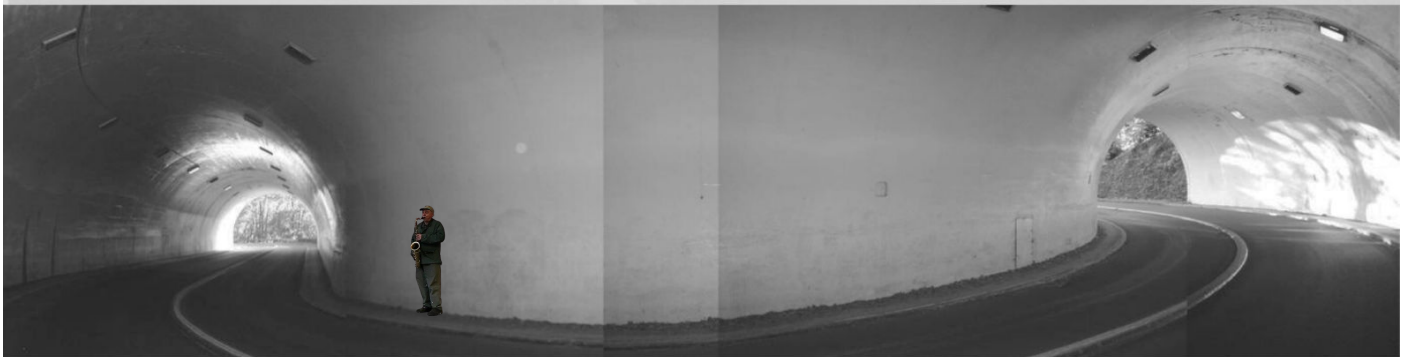
BUILT IN 1942 AT THE BOTTOM OF THE BUTTE IN THE LOCATION WHERE I-205 CURRENTLY IS, THIS JAIL EVENTUALLY BECAME KNOWN FOR DIRE CONDITIONS AND REGULAR ESCAPES AND WAS LATER NICKNAMED "THE SIEVE" BY LOCAL RESIDENTS.

IN 1983 IT CLOSED AND THE STONES REPURPOSED IN THE HISTORIC COLUMBIA RIVER HWY





Built in 1939, this tunnel achieves a 257 degree turn through basalt rock with such a sharp curve that the exit passes over the lower entrance portal!



The tunnel is a relic of an era when people began to consider transportation as recreation. It was the second most expensive WPA project in Oregon, following Timberline Lodge on Mt. Hood. This project taught masonry skills and provided work for up to 700 men who were unemployed after The Great Depression.



PHOTO CREDIT: MARK C. SCHERZINGER



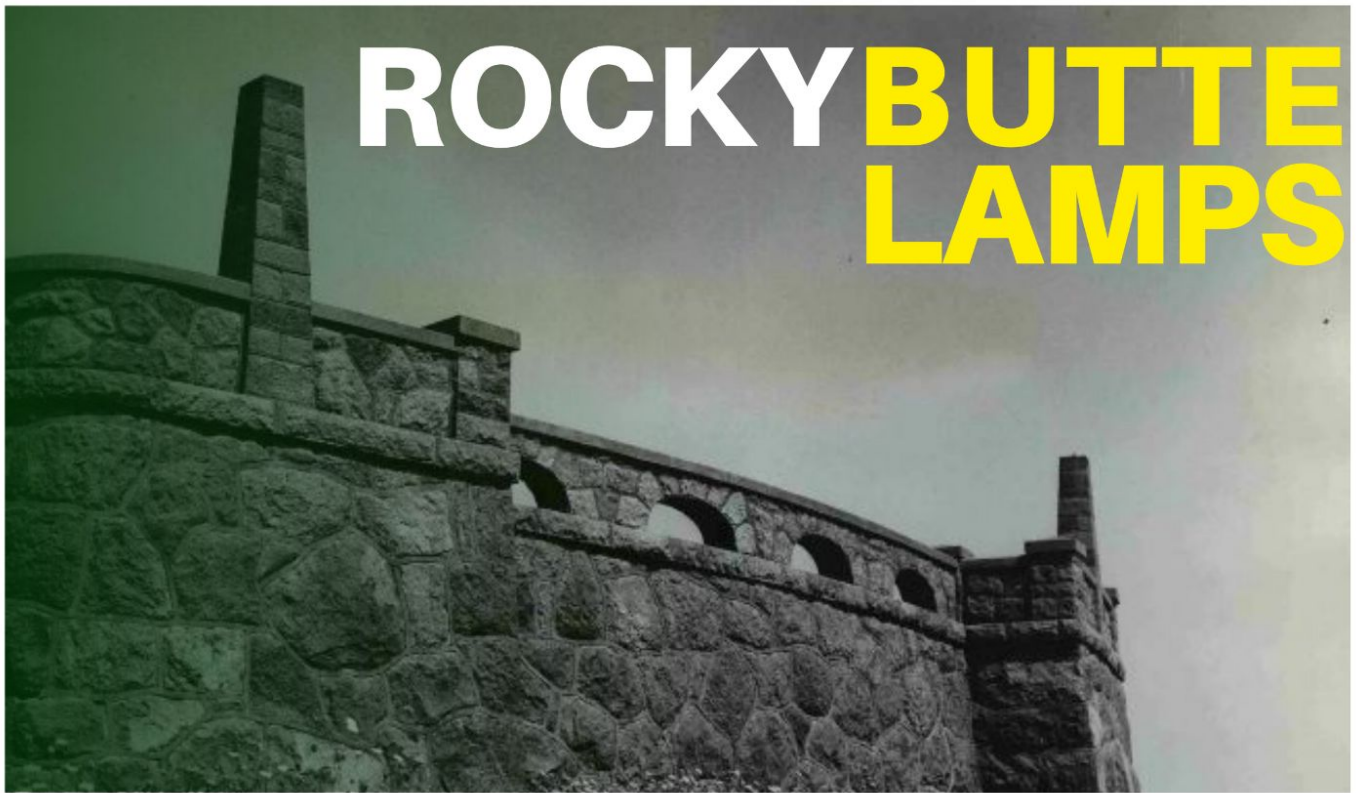


Hill Climbs at The Incline

In the 1920s - 1960s Portland thrill seekers had plenty of opportunity to slake their thirst for daredevil tactics at the Rocky Butte "Incline". This torturous grind up the hillside was located on the western slope near 92nd and Russell st. and was regarded as one of the most challenging in the country. The 800 foot long course led to the rocky summit, featuring a 75 per cent pitch.

"This picture caught Windy Lindstrom just as he ducked away from a 350-pound cycle which had spilled him."





60 YEARS THE BASTIONS WERE DARK

The parapet of the retaining wall at the butte's summit is articulated with bastions in which square tapered stone lamp posts are centered. The lamp posts were empty until 1995, when neighbors advocated, organized and installed the 16 lamps.



PHOTO BY: SHANE KUCERA

The Edgewater Luminaire style is featured in the design which was modeled after the lamps at Crown Point Vista House in the Columbia Gorge. The fixtures are cast aluminum hexagonal holders with polycarbonate prismatic panels.





5,000 Balloons take to the breeze atop Rocky Butte

April 9th, 1957

Meier & Frank released them in celebration of their 100th anniversary. 500 of the balloons carried redeemable prizes!



76 PINTO RUNABOUTS

NOW! \$2795



Meier & Frank Co.
FIFTH, SIXTH, MORRISON AND ALDER • • • Broadway 4411
PORTLAND'S OWN STORE

ROCKY BUTTE QUARRY

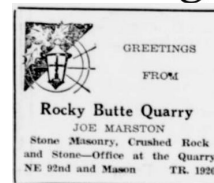
Mult.Co Archives Title: Yesterdays DOI: 2011-000732/006

From the 1840s -1960s the quarry was in operation on the east cliff side. Many structures and monuments around Portland were built with Rocky Butte stone including:



- PORTLAND HOTEL 1882
- WALLA WALLA PENITENTIARY 1886
- STEEL BRIDGE 1912
- WESTMINSTER PRESBYTERIAN 1914
- NW CORNELL TUNNEL 1940
- WITCH'S CASTLE IN FOREST PARK 1930
- COL. SUMMER'S PARK MONUMENT 1938
- OLD COLUMBIA HISTORIC HIGHWAY

Regular dynamite blastings often sent rocks flying half a mile away into neighbor's houses. Residents would call the newspapers to complain about the cracks appearing in their walls and ceilings with broken windows. I-205 now covers the location, but you can still find the moss covered foundations when bushwhacking the east slope.



Activity On Rocky Butte Makes It More Than Just A Hill

January 9, 1947

Popcorn Vendor Run From Butte By Law Officer

May 17 1938

Though the top of Rocky butte is a good Sunday drive, and a "neckers" paradise, it is no place for a popcorn or peanut vendor to display and sell his wares.

A belligerent popcorn man learned this to his sorrow yesterday.

The vendor drove his white, coughing popcorn jallopie to the top of the butte shortly after noon and was about to sell a few sacks of the corn when a deputy sheriff chased him off the hill.

Famed Flying Missile of Rocky Butte Seems Doomed to Be Eternal Mystery

Oregonian July 21, 1985

The History

Blast Shakes Vandal's Rocky Butte mar butte Butte masonry

September 20, 1961

An ear-cracking blast, apparently caused by dynamite, sent a cloud of smoke and dust into the air in a fill area just north of the Banfield Freeway and east of NE 92nd Avenue and NE Halsey Street.



Birth

Teens, cars, stereos
Rocky Butte 'wired' for noise

November 28, 1920

Ten Escape Butte Jail, 90 Remain

January 26, 1944

Rope Fashioned of
Mattress Ticking
Used in Getaway

Luxury? Heck! Not at Butte

By PHYLLIS LAURITZ
Staff Writer, The Oregonian

Look, girls, in case any of you read that report of the Multnomah county grand jury which included the remark, "we do believe that the women's quarters in the new Rocky Butte jail are too luxurious," don't go overboard for a career as a gun moll just yet. It isn't worth it. November 2, 1943

Omak Whips Rocky Butte

By JOHN PURCELL
Sports Writer, The Oregonian

August 9, 1968

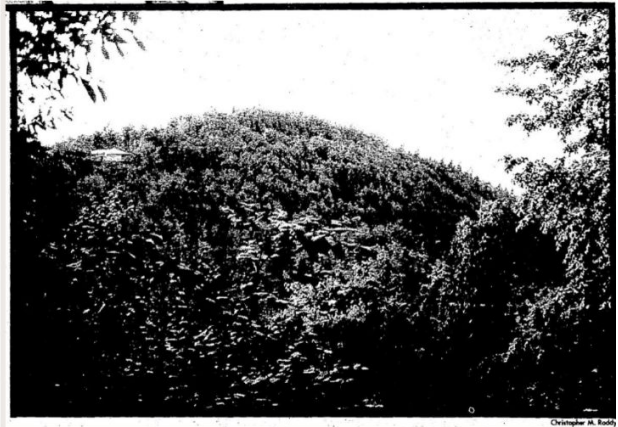
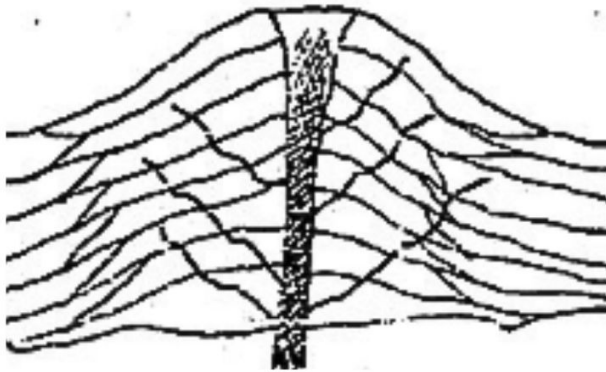
Rocky Butte Is Wearing Her Fall Dress

You can also see this charming 2-bdrm. modern home at 8903 NE Brazee. Hdwd. flrs., a.-c. heating, 62x126 lot with lawn and shrubs. Eight minute bus service, 2 bks. Asking \$7950, low down. Make offer. MR. SNELL, CA 1703 or residence SU 7027.

REALTY LOAN CORP.
400 Henry Bldg. CA 1703

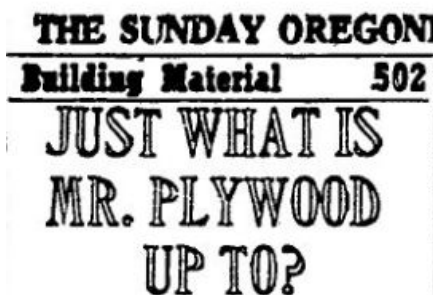
October 23, 1949

JUST YOUR BORING NEIGHBORHOOD VOLCANO



Rocky Butte is an extinct cinder cone volcano and part of the larger Boring Lava Field, a network of Plio-Pleistocene fissure vents that were not-so-boring when molten rock was surging through our neighborhoods.

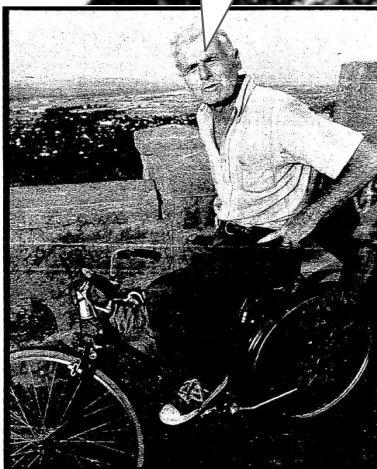
You may know of the other local seismic celebrities such as Mt. Tabor, Powell Butte, Larch Mountain, Kelly Butte and Mt. Scott...but Rocky Butte takes the pyroclastic prize for being the best viewpoint in town.



ROCK CLIMBING ON THE BUTTE

PORTLANDERS
HAVE BEEN
CLIMBING THESE
CRAGS AND
CREVICES FOR
MANY YEARS,
BUT IN THE 1970S
IS WHEN THE
EASTERN CLIFF
BECAME
POPULAR AND
IS IDEAL FOR
RAPPELLING,
TOP-ROPING,
OR LEAD
CLIMBING.

And also the
epic cyclists
who bomb down
the hill!



Skateboarders
too!



PORTLAND NURSERY

5050 • SE STARK
232 • 0463

When in Portland have dinner at the
CANYON GRILL



**THANKSGIVING
DAY**

OPEN 2 P.M.

**RESERVATIONS
774-1135**

Traditional Turkey Dinner

Reserve Now For Thanksgiving

**2610 S.E. 82nd (at Division)
Open 4 P.M. DAILY - Sun. 2 P.M.**

SUPER-SIREN



Super-Siren to Give Voice in City Wednesday

This 3-ton machine was an air raid warning device that was brought up to Rocky Butte by the civil defense authorities in 1942. It was scheduled to demonstrate its noise making capabilities by releasing a "super growl" that would be heard for 10 miles. Deputy Sheriffs were posted throughout the city to measure the auditory test run, however the results were disappointing and one woman living near the butte said it sounded "just like the saw mill's noon time whistle."

August 23, 1942

OREGON
SYMPHONY
ORCHESTRA

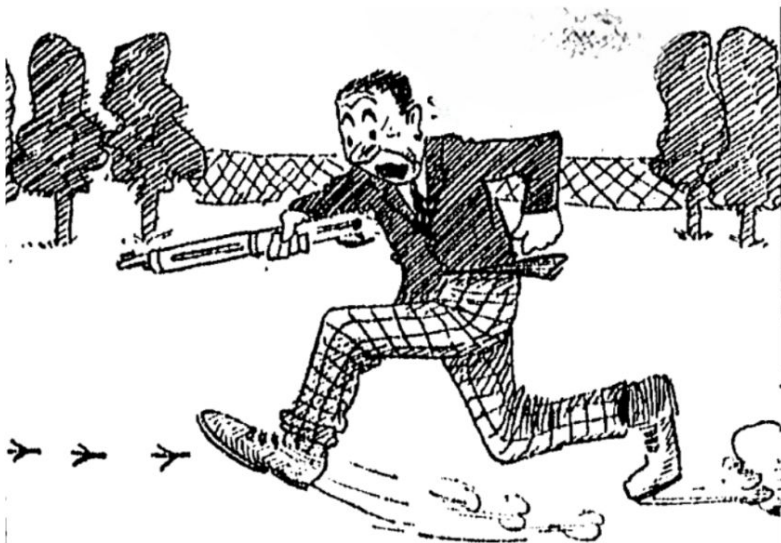
JACQUES SINGER conducting



TURKEY SHOOT AT THE BUTTE



Located at 9915 NE Hancock drive, The Rifle Club's Rocky Butte Range would host live turkey shoot contests during the Thanksgiving holiday.



THE TURKEY SHOOT AT THE PORTLAND GUN CLUB TODAY FORECASTS A BAD WEEK FOR THE BIRDS

However, the Humane Society advocated to stop these events and by the 1930s club members would instead win a turkey by shooting targets of Bluerock.



TURKEYS
Live or Dressed, for California & Northwestern shipments. Ask About our Pick-up & Dressing Service
RUBY & CO.
Front and Salmon

• DINNERS • COCKTAILS
COLE SLAW our specialty
★ HAM ★ TURKEY
★ SEAFOOD
ORDERS TO GO

HUBER'S OPEN 9 AM TO 1 PM
220 SW STARK
Plenty of free parking across the street after 6 PM
• CA 8-5686

• LUNCHEONS

SUNDAY
Two Full Course Turkey Dinners
45c and 75c
Jolly Joan

Three Entrances
515 S. W. BROADWAY 630 S. W. PARK AVE.
720 S. W. WASHINGTON

FEB 4
1929

I FAW DOWN AND GO BOOM!—MAYBE



ROCKY BUTTE SKI JUMP

Hundreds of spectators lined the precipitous slope of the Incline at Rocky butte to watch the the Cascade Ski club event. With a snow blanket of only 5 inches, the leapers risked their necks at every jump and spills were numerous. Thor Lief made the longest jump of the day at 83 1/2 feet.



Ski Shoes
MEN'S & WOMEN'S
Special Price
\$4.95 &
\$6.50

Spellman's
BUSTER BROWN SHOE STORE
802 S. W. MORRISON AT PARK

CARRIAGE REPOSITORY.

FRANK BROS. IMPLEMENT CO
68 and 70 Front St., Portland, Or.



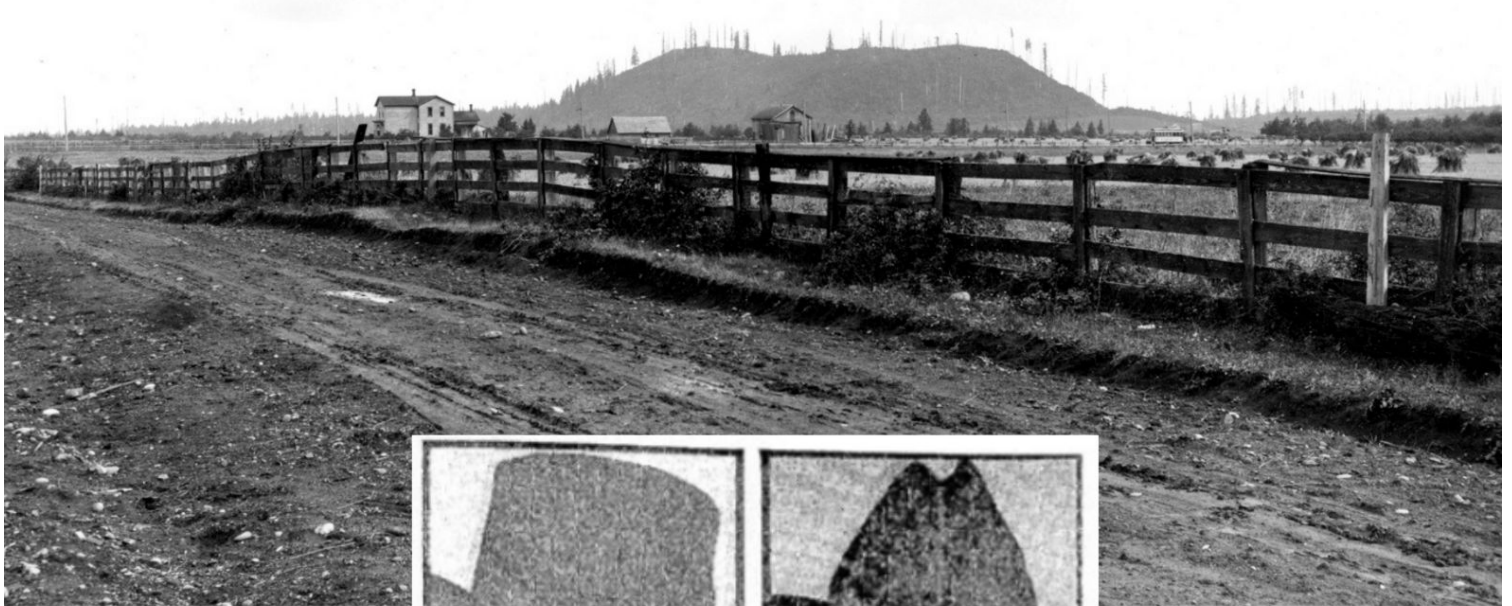
DR. S. E. WRIGHT'S
DENTAL OFFICE

A MURKY
DECEMBER

A RUSTIC
ROAD

AN ILLEGAL
CACHE

BULL RUN BOOTLEGGERS AT ROCKY BUTTE



The year is 1918, and amid the bushes in the Rocky Butte foothills lays a hidden cache from the Baker Brothers, Bootleggers who were running booze from Portland to California.



They were successful in the early days of the Prohibition,

but one day bad luck caught up with them while driving down 82nd ave when their car hit a bump and a handgun accidentally fired and killed one of the brothers on the scene.



PORTLAND GOAT FARM SUCCESS

A clipping from the Oregonian Newspaper, November 5th 1921

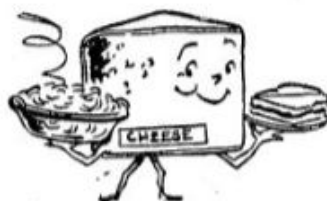
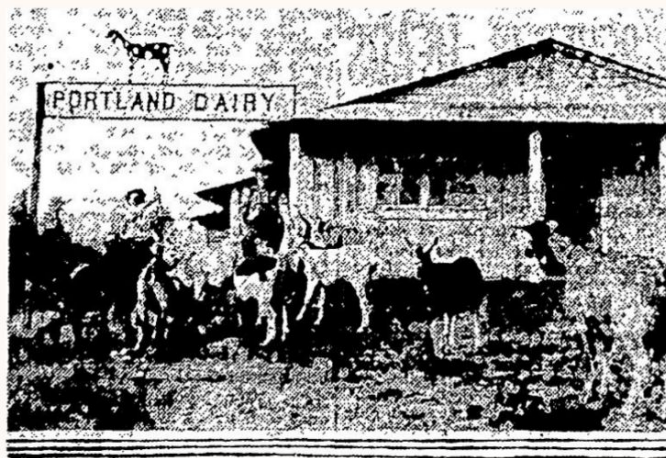
One of the biggest little industries in the city of Portland is operated by the Portland Goat Dairy Company at East Eighty-second and Fremont streets. There are approximately 250 goats on the payroll and they range over a tract of 7000 acres of



brush land owned by the O-W. R. & N. company, lying eastward from East Eighty-second street and including Rocky butte.

Practically all of its milk supply at present goes to feed babies in delicate health. About 40 Portland babies are living on goats' milk from this dairy. Grown-ups thrive equally well upon it, with many business men take it regularly with their noonday luncheon.

In the herd are some of the finest specimens of Nubian, Toggenberg and Saanen strains. One pound of hay per day for each goat is a fair winter ration and their grazing habits are above reproach.



Rocky Butte

PLANE CRASH

January 1983



Federal investigators search among the wreckage of a single-engine airplane that narrowly missed houses along Northeast Sacramento st. near 92nd ave. It burst into flames upon impact with the butte, killing the pilot and scattering bank documents, money checks and non-negotiable securities. Stephen Keyes was the 39 year old pilot and was an experienced flyer on a routine flight pattern, authorities say the cause was undetermined.

"Treetops were sheared off at the 50-foot level on the side of the butte"



JALOPIES CRASH TO DOOM ON ROCKY BUTTE

Photo from Oregonian Historical Archives



IN 1938 THE AUTOMOTIVE DEALERS ASSOCIATION SPONSORED PUBLIC "DUMPINGS" AS A WAY TO BUY BACK STEEL FROM CONDEMNED CAR MODELS. THE STEEP WESTERN SLOPE AT THE EAST END OF FREMONT STREET WAS THE SCENE OF FLAMING CARS BEING LAUNCHED 400 FEET TO CRASH BELOW AT THE QUARRY SITE.

Good-bye Old Jalopy, the Junk Heap Is the Next Stop! Here's What Happens When a Wornout Car Crashes Off the Highway

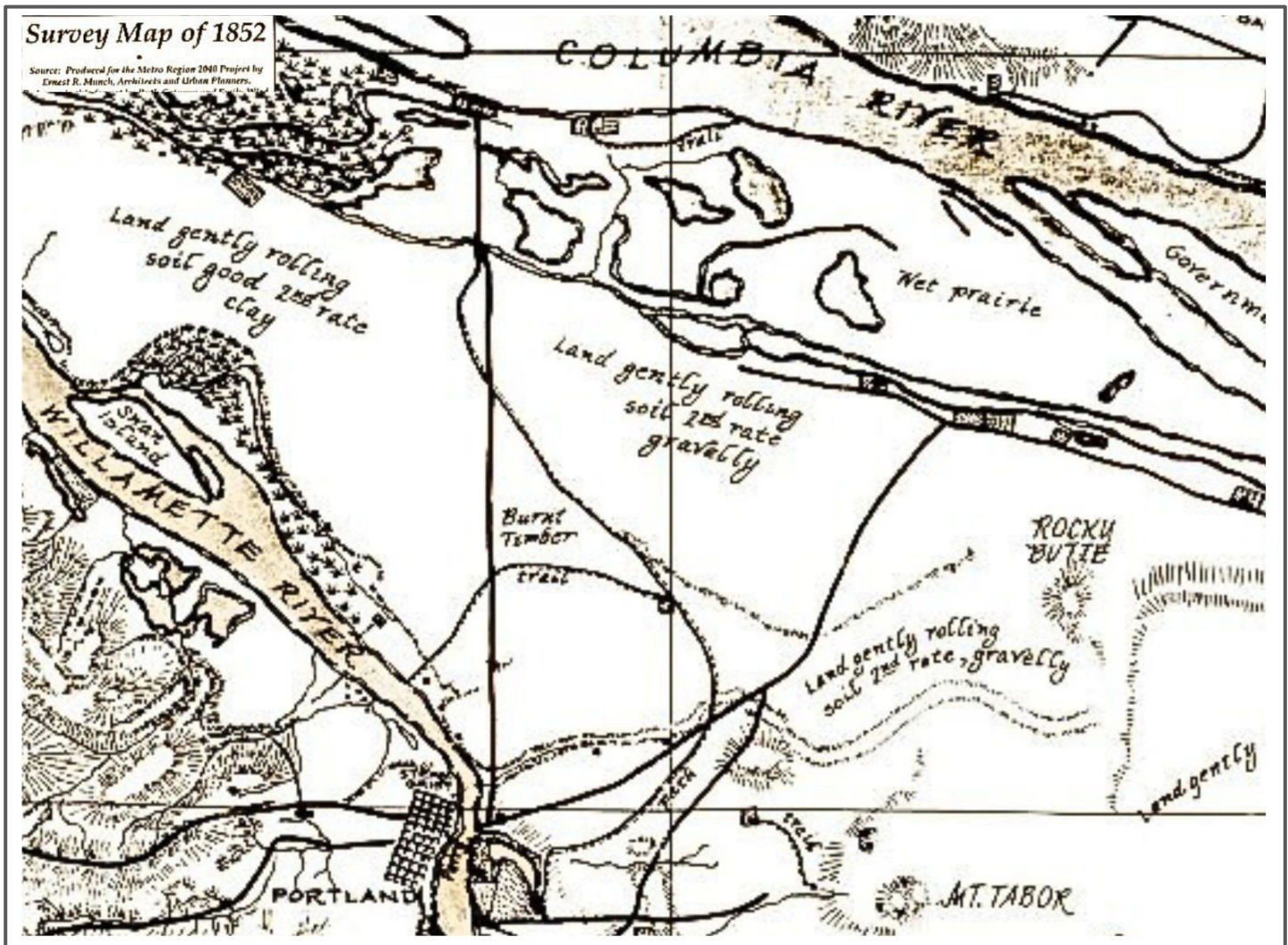


See 25
**FLAMING
AUTOS**

Pushed Off Cliff
JALOPIE JAMBOREE
Rocky Butte Quarry
North Side Rocky Butte
Saturday, 1 P. M.

See FREE AUTO SHOW
Lloyd Center, 2 Till 8:30 P. M.
Saturday, Weather Permitting

Rocky Butte, with its volcanic origins, winding roads, stone parapets, iconic lights and hilltop park is on the National Register of Historic Places.



It is a landmark of the urban/natural divide in Portland, a unique place where metropolitan sprawl has carved around stubborn basalt and left a sector of forest with panoramic views.

Hopefully you can visit this city crown very soon!



If you are interested in beautifying the butte, learning more about local history or becoming involved please visit:
www.RockyButtePreservationSociety.org